


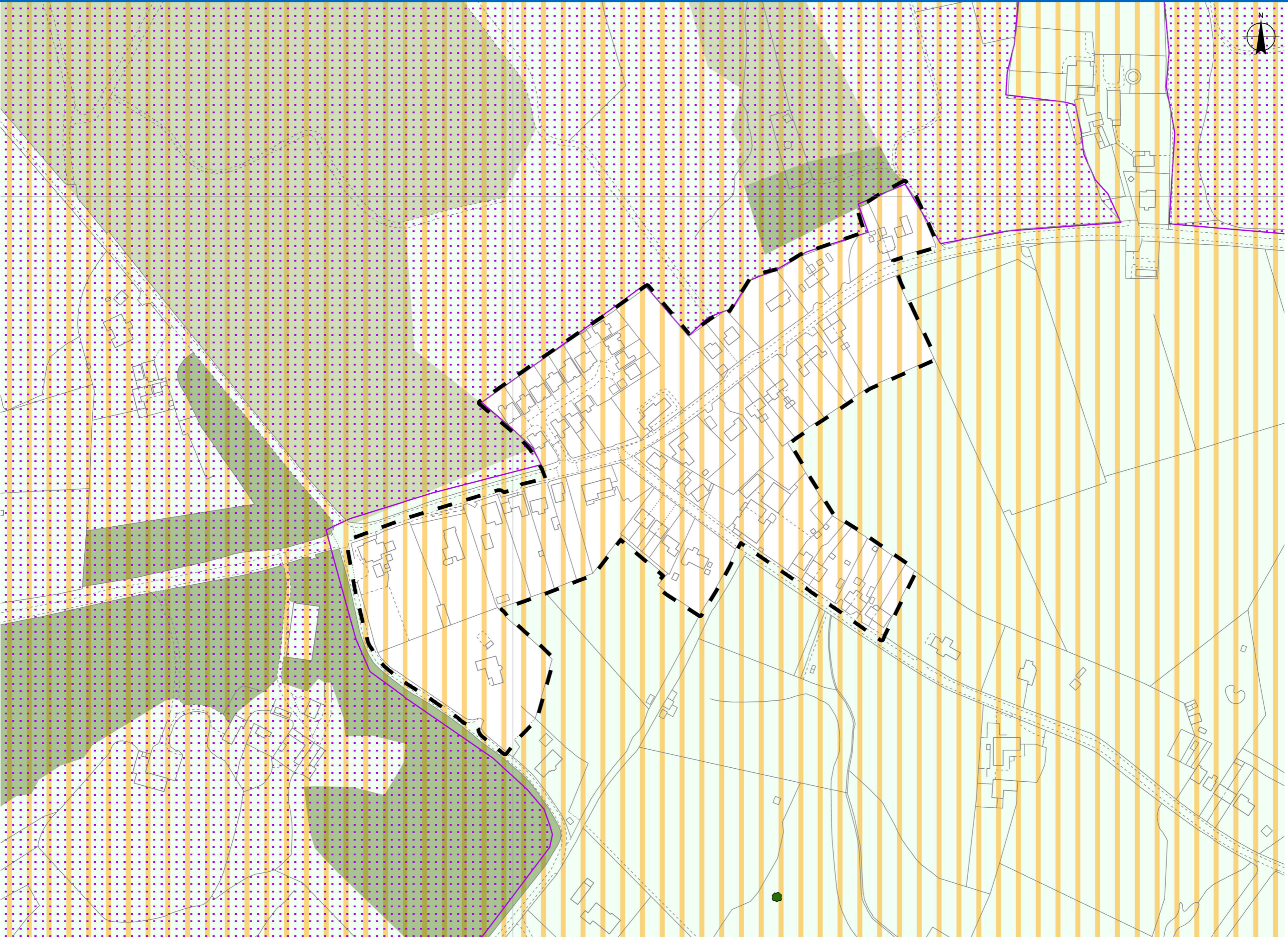
**Southwater Neighbourhood Plan Allocations**

-  Ancient Woodland: Policy SNP18.2 – A Treed Landscape
-  Formal/Informal Sports Areas: Policy SNP7 – Christ's Hospital NW Playing Fields; Christ's Hospital Southern Playing Fields; Denne Park Recreational Area; New (2019) Cricket Pitch; New (2019) Sports Field; Playing Fields off Coltstaple Lane; Southwater Leisure Centre Open Space
-  Local Green Space: Policy SNPs - Old Stalkers Lane (East of Cripplegate Lane); Allotments East of Easteds Lane; Allotments behind Village Hall; Butterfly Garden; Cedar Drive Open Space; Christ's Hospital Green Space; Informal Nature Reserve adj Chesworth House; East of Easteds Lane; Larkspur Way Open Space; Nutham Lane Open Space; Open Space East of Nyes Lane; Swan Close Open Space; Woodlands Way Open Space
-  Parish Heritage Asset: Policy SNP19 – The Ecclesiastical Footpath between Boar's Head & Tower Cottage; Christ's Hospital Station Goods Shed; Denne Parkland; Station Cottages at Christ's Hospital Station; Bax Castle Pub, Two Mile Ash; Calcot, Worthing Road; Cripplegate Mill Stone, Cripplegate Lane - Location TBC; Disused Railway (Downs Link) & Old Railway Bridges; Easteds Barn, Easteds Lane; Edwardian Railway Cottages, Station Road; Elm Cottage, Worthing Road; Hen & Chicken Pub; Iggy the Dinosaur, Lintot Square - Location TBC; Old Brick Yard Gates & War Memorial, Lintot Square; Old Post Office, Worthing Road; Old School House, Worthing Road; Pump Cottage, Worthing Road; Roman Bridge, Pond Farm Ghyll - Location TBC; Southwater Village Hall; Ye Olde Barn, Worthing Road
-  Promoted Route: Policy SNP13.4 – Enhancing Non-motorised Transport Network

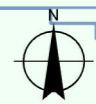
**Horsham Town (unparished area) Neighbourhood Plan Allocations**

-  Policy HB10 – Green Infrastructure; Associated Green Infrastructures; Cemeteries; Green Infrastructure identified by Horsham Society; Rivers; St Leonards Park Ponds SSSI; Ancient Woodland; Warnham Local Nature Reserve

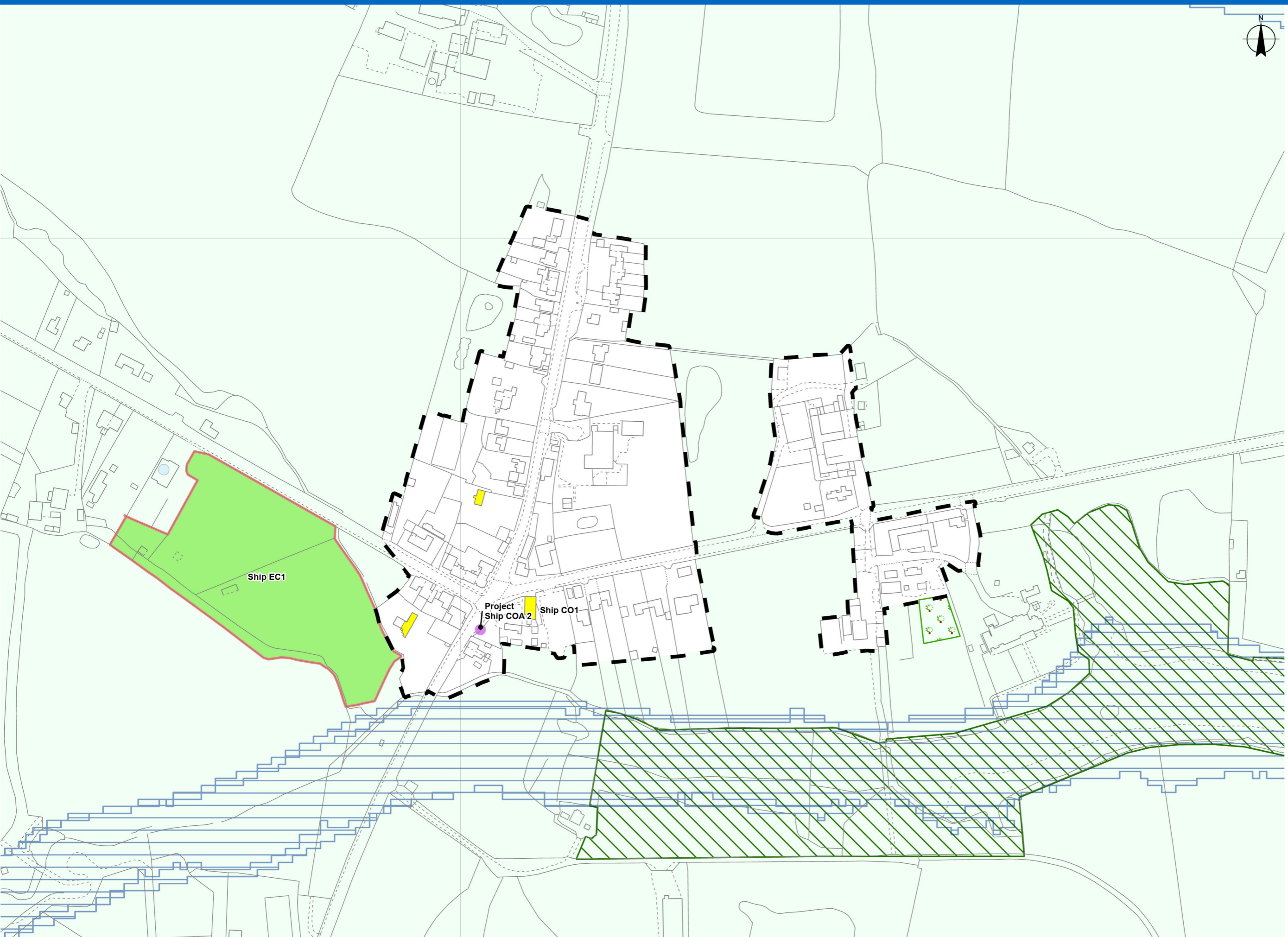




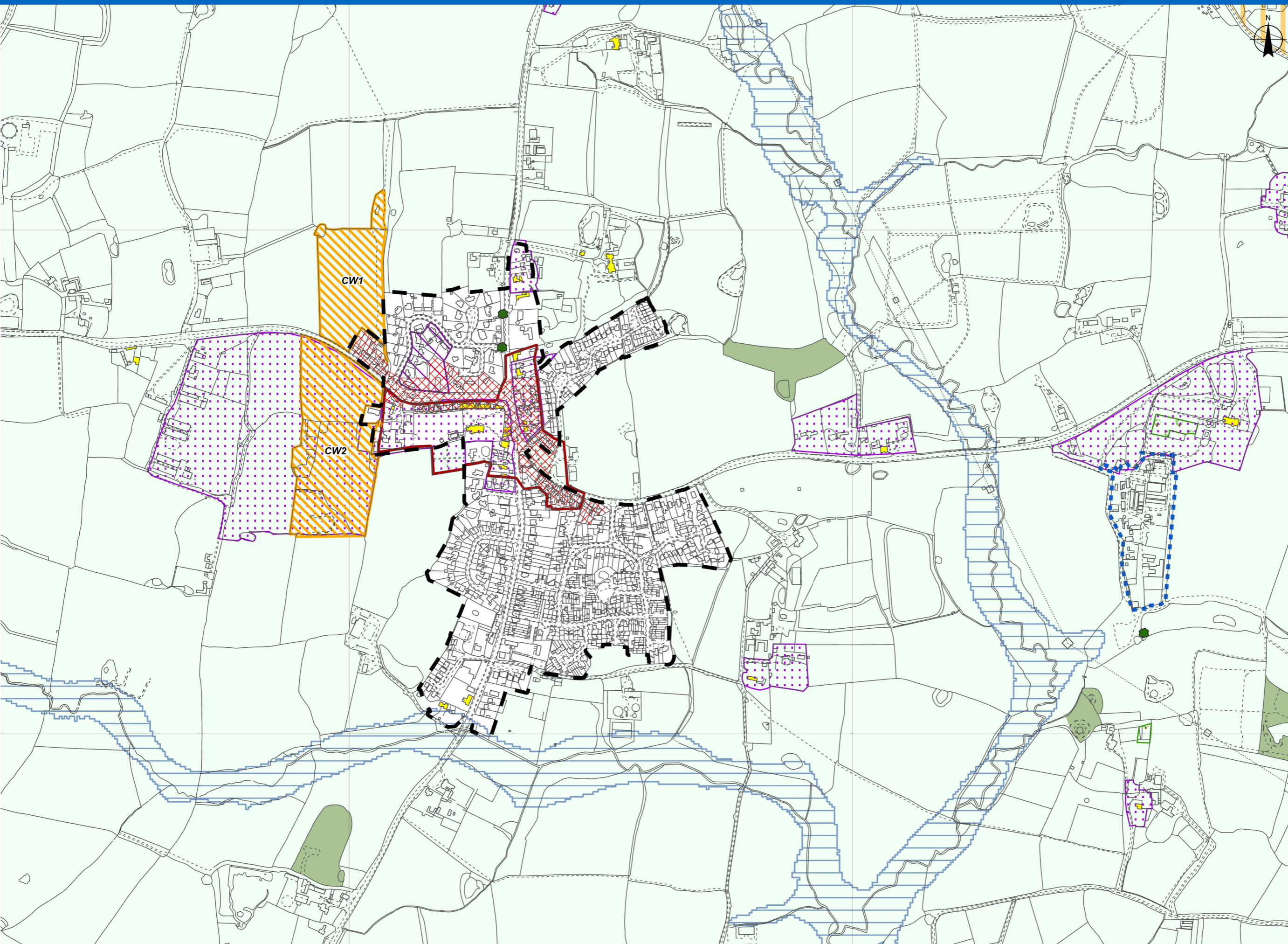




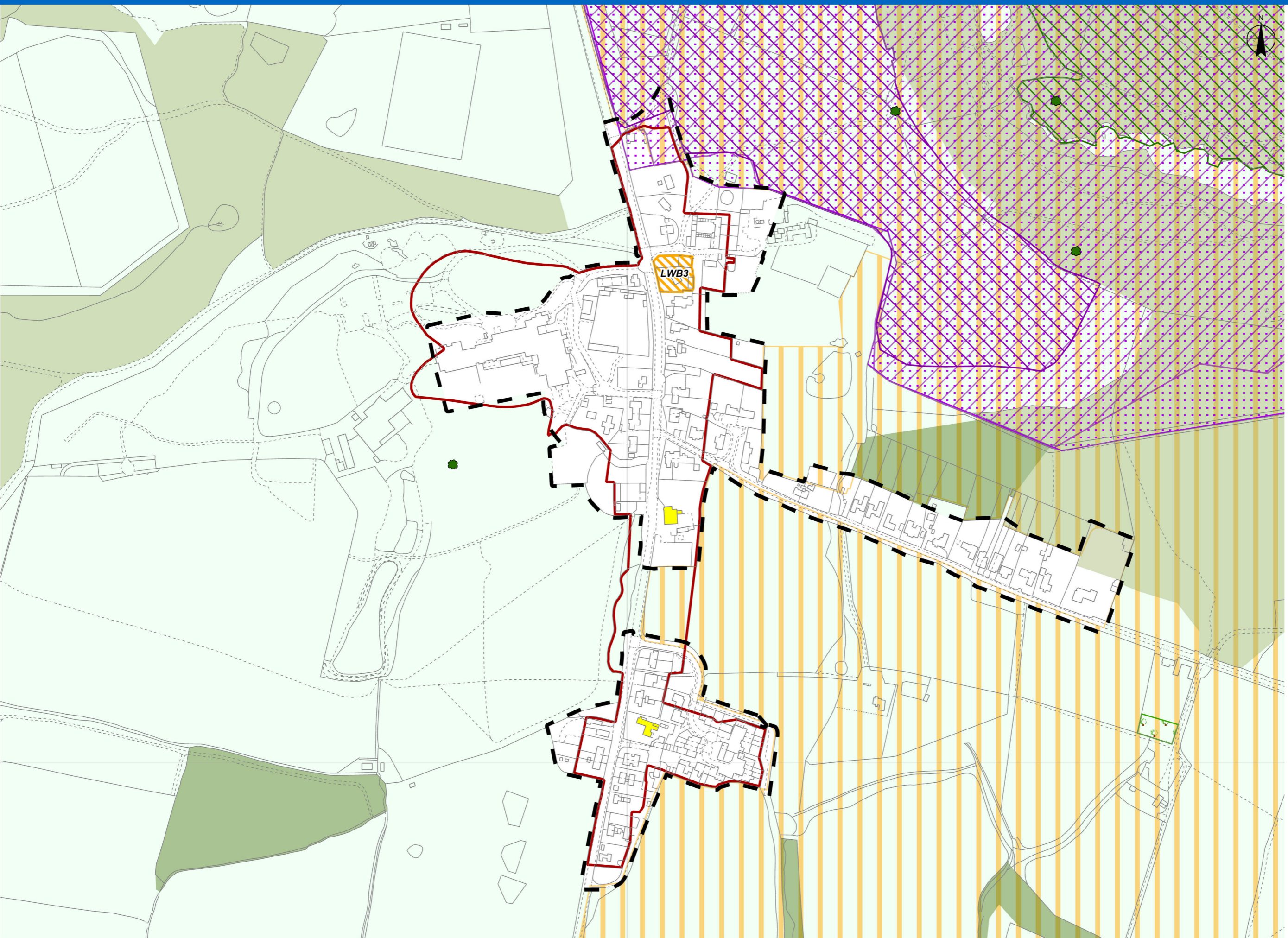
- Shipley Neighbourhood Plan Allocations**
- Local Green Space: Policy Ship EC1 – Coolham Playing Fields
  - Local Heritage Assets: Project Ship COA: 2 - Coolham Advanced Landing Ground War Memorial
  - Retail, Social & Community Facilities: Policy Ship CO1 - The George & Dragon, Dragons Green; Coolham Village Hall; The Andrews Hall; The Countryman Inn, Shipley; The Selsey Arms, Coolham



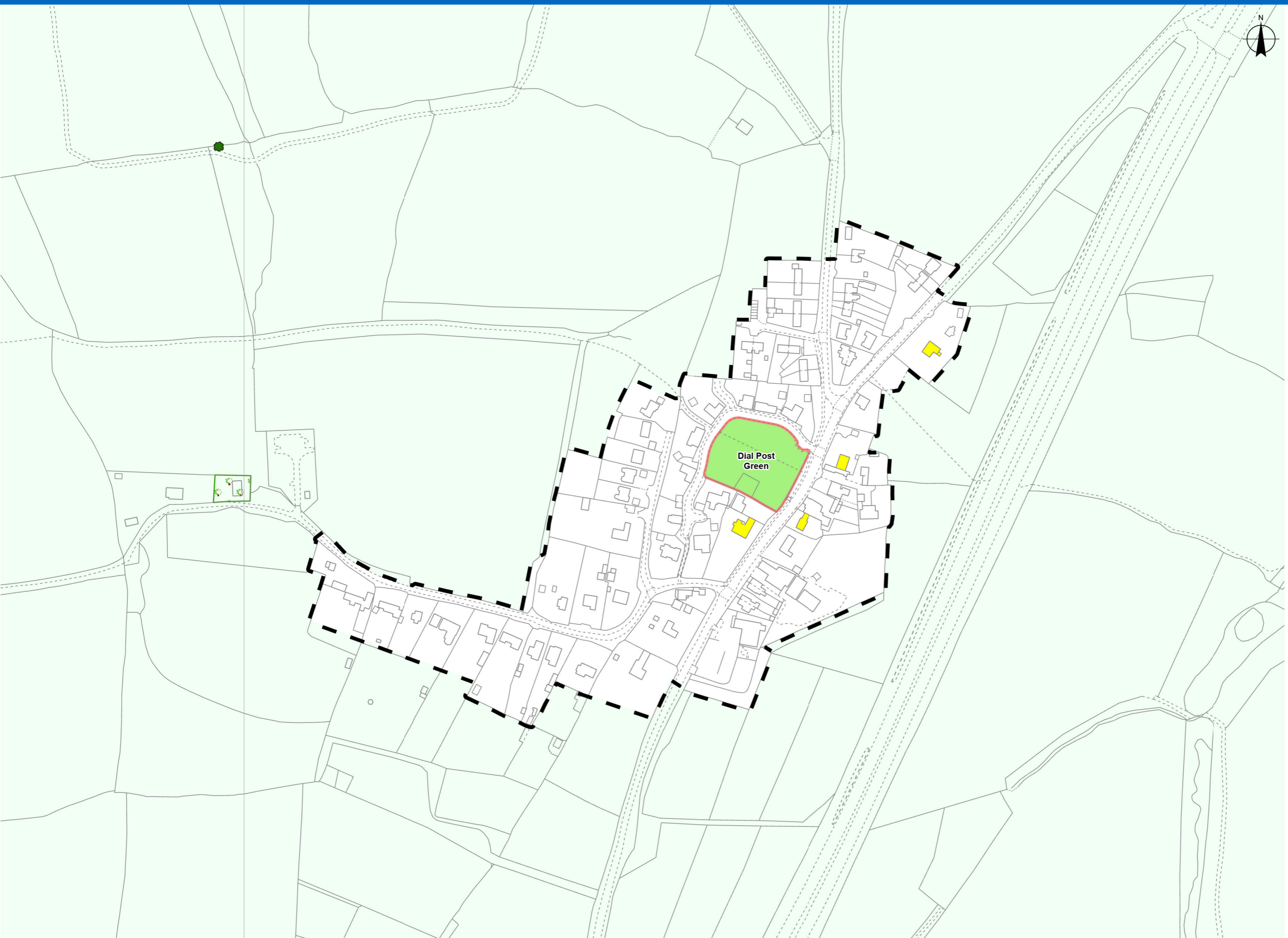












**West Grinstead Neighbourhood Plan Allocations**

- Local Green Space: Policy 3 – Dial Post Green